

## Interpon: Specifications Guide







The Royal Children's Hospital



# Interpon Specifications Guide

## Contents

<b>Specifications Standards</b>	<b>5</b>
<b>Architectural Aluminium</b>	<b>6</b>
Performance Warranties	7
<b>Other Metals</b>	<b>12</b>
Performance Warranties	13
<b>Corrosion Warranties</b>	<b>15</b>
<b>Perforated Panels</b>	<b>18</b>

## Understanding Performance

Interpon Powder Coatings Australia develops and manufactures high performance architectural warranty grade powders that have been specifically formulated to meet both local and international architectural coating performance criteria.

The performance criteria are typically based upon requirements defined in the Australian and International Standards. Performance criteria described by these voluntary standards are outlined to provide various levels of powder top coat performance and form the basis for top coat performance warranties:

- Film Integrity – Cracking and checking
- Color retention performance
- Mechanical performance
- Chemical resistance
- Corrosion resistance

Based on the types of powder finishes selected for a project the designer, fabricator, builder or building owner may not always get the performance warranty that was initially intended.

## Understanding the Performance Criteria for your project

Each individual finish has a specific performance requirement and as such is typically based around building code requirements and environmental concerns. Local Australian and international performance standards are based on exterior exposure at Allunga QLD Australia and South Florida USA – these locations are selected as they have the highest average exposure to UV, humidity, rainfall and exposure to sea salts which are independently assessed.

The selection of the architectural powder coat finish will be determined by the classification of the building.







# Specifications Standards

## Global Standards

Globally recognised, the American Architectural Manufacturers Association (AAMA) outlines the following performance guidelines for all inorganic architectural coatings. These are based on real time exterior performance and form the basis of the warranty structures available.

Standards	UV Resistance	Corrosion	Coating performance warranty	Most Suitable Interpon Products
AS3715	1 yr Allunga	1000 hours	10 years	
AAMA 2603	1 Year Florida	1000 hours	10 years	
AAMA 2604	5 Year Florida	3000 hours	25 years	
AAMA 2605	10 Year Florida	4000 hours	30 years	

### Global Warranties

Akzo Nobel is the world's largest manufacturer and supplier of ultra-performance globally warranted architectural grade powder coatings – Interpon. For peace of mind, some fabricators choose Interpon powder coating's global network of accredited applicators to attain the Interpon global performance warranties specific to their project. It should be noted that the warranties are applicable to the country where the components were prepared and applied and warranty information should be sought through this channel. Should you require further assistance on the warranty – please seek information from the Akzo Nobel office in the country of application or contact your local Interpon powder coatings representative for advice.

## Product Performance

	D3020 Fluoromax®	D2525 Futura™	D1000
AS3715	–	–	✓
AAMA 2603	–	–	✓
AAMA 2604	✓	✓	–
AAMA 2605	✓	–	–
Building Code of Australia	All BCA classes Any building, any height All locations	All BCA classes Any building, any height All locations	BCA Class 1 & 10 <b>Domestic residential only</b> Up to 3 storeys Must be > 100 metres from salt water
Coating technology	Hyper Durability Fluoropolymer	Ultra Durability Polyester	Exterior Durable Polyester
Film integrity warranty	30 years	25 years	10 years
Color retention warranty	20 years	15 years	10 years



# Architectural Aluminium



# Architectural Aluminium Performance Warranties

## What to Specify



Project Type	Environment	D3020 Fluoromax®	D2525 Futura™	D1000
Monumental	Coastal / Marine / Severe / Tropical	✓		
	Standard	✓		
Commercial	Coastal / Marine / Severe / Tropical	✓	✓	
	Standard	✓	✓	
Multi-Density Residential	Coastal / Marine / Severe / Tropical	✓	✓	
	Standard	✓	✓	
Domestic Residential	Coastal / Marine / Severe / Tropical	✓	✓	
	Standard	✓	✓	✓

### BCA Compliance

Akzo Nobel Australia have a range of ultra-durable architectural grade powder coat finishes that offer between 10, 25 and 30 year warranty performance depending on the building class and location of a project. Some grades of powder coat finish are only suitable for specific projects and locations which relate directly to the classes of building noted in Building Code of Australia (BCA). It is therefore important to specify the correct grade or architectural powder coat for your class of building to ensure you are getting the most appropriate warranty performance.

For instance, Interpon D1000 is designed to provide performance for Domestic Residential projects and will offer a 10 year warranty for buildings or structures that meet BCA Class 1 and 10 only. There are also geographic location restrictions on D1000 which needs to be considered and should not be specified for multi-density residential or commercial developments where warranty performance is required.

Interpon D2525 and Interpon D3020 have been designed to provide long term performance warranties for all projects in all building classes and all locations.

Should you require further information please contact Interpon Customer Service.



# Architectural Aluminium Performance Warranties

## Multi-Density Residential, Commercial and Mixed Developments

Interpon D3020 Fluoromax®



<b>Colors:</b>	Custom and made-to-order colors Matt finish only
<b>Warranty:</b>	30 years film integrity warranty* 20 years color retention warranty*
<b>Building requirements:</b>	Any building, any height
<b>Environmental conditions:</b>	All locations where hyperdurable weatherability is required
<b>Standards:</b>	AAMA2605, AS3715
<b>Project suitability:</b>	Ideal for all exterior applications Marine residential, facades, curtain walls, louvres, sunblades, balustrades etc

\* Warranty conditions apply.



### Macquarie University Library

Sydney, Australia

#### Architect

FJMT

#### Builder/Developer

AW Edwards Pty Ltd

#### Product

Interpon D3020 Fluoromax® Burnished Russet Matt

Interpon D3020 Fluoromax® Jarrah Matt

Interpon D3020 Fluoromax® Clay Bake Matt

#### Components coated

AVS fins



### Specification Example for Interpon D3020 Fluoromax®

Color: Interpon D3020 Fluoromax® Burnished Russet Matt

Product code: 8M200A

Warranty: 30 year performance warranty powder coat

Conditions: To be prepared and applied by an Interpon Accredited Applicator to meet coating performance of AAMA2605



# Architectural Aluminium Performance Warranties

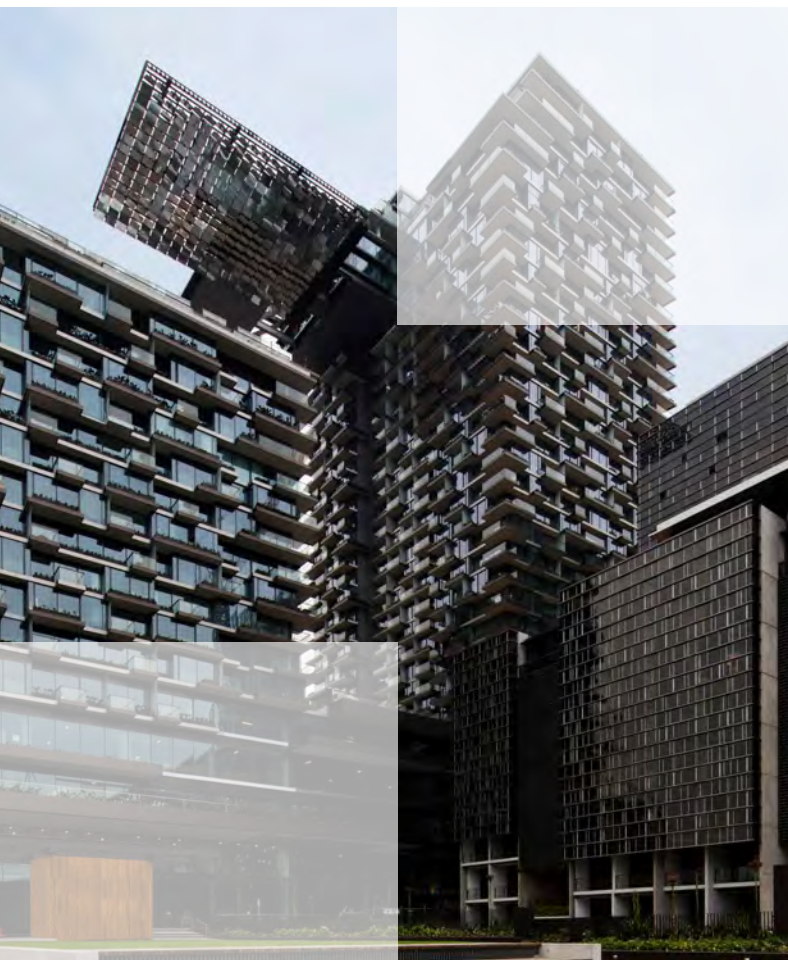
## Marine Domestic, Commercial/Mixed Use and Multi-Density Residential

Interpon D2525 Futura™



<b>Colors:</b>	<p>55 ex-stock colors</p> <p>Flat Matt, matt, satin, gloss, metallic and textured finishes</p> <p>Custom, made-to-order colors available</p>
<b>Warranty:</b>	<p>25 years film integrity warranty*</p> <p>15 years color retention warranty*</p>
<b>Building requirements:</b>	Any building, any height
<b>Environmental conditions:</b>	All locations where ultradurable weatherability is required
<b>Standards:</b>	AAMA2604, AS3715
<b>Project suitability:</b>	<p>Suitable for both exterior and interior applications</p> <p>Examples: Shop fronts, louvres, balustrades, sunshades, perforated screens, window and door systems, curtain walls</p>

\* Warranty conditions apply.



### One Central Park

Sydney, Australia

#### Architect

PTW Architects

#### Builder/Developer

Watpac Constructions

#### Product

Interpon D2525 Futura™ Asteroid Pearl Matt

#### Components coated

Forming shopfronts, mullions, rafters and glazing supports



### Specification Example for Interpon D2525 Futura™

Color: Interpon D2525 Futura™ Asteroid Pearl Matt

Product code: YY270A

Warranty: 25 year performance warranty powder coat

Conditions: To be prepared and applied by an Interpon Accredited Applicator to meet coating performance of AAMA2604



# Architectural Aluminium Performance Warranties

## Decorative timber-like finish

Interpon D2010 STF

<b>Colors:</b>	Standard and custom, made-to-order colors
<b>Product performance warranty:</b>	15 years
<b>Building requirements:</b>	Any building, any height
<b>Environmental conditions:</b>	All locations where ultra durable weatherability is required
<b>Standards:</b>	AAMA2604, AS3715
<b>Project suitability:</b>	Marine Domestic and Multi-Density Residential Windows and doors systems, screens, shutters, louvre systems etc



### Specification Example for Interpon D2010 STF

Color: Interpon D2010 STF Bush Cherry

Product code: YZ301A

Warranty: 15 year performance warranty powder coat

Conditions: To be prepared and applied by an Interpon Accredited Applicator to meet coating performance of AAMA2604

Note: Interpon Powder Coatings only warrants the base coat.  
The total system will need a warranty from the system supplier (eg Knotwood).



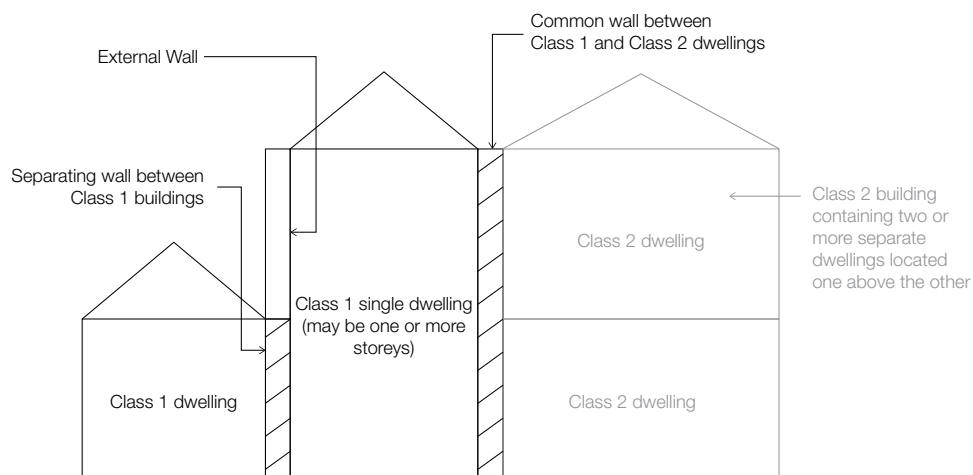
# Architectural Aluminium Performance Warranties

## Domestic Residential

Domestic residential properties are relatively easy to maintain as they are generally only a couple of storeys high.



### Identification of Class 1 Buildings



### Interpon D1000

#### Colors:

150 plus ex-stock colors  
Flat Matt, matt, satin, gloss, metallic and textured finishes  
COLORBOND® Excel™ colors  
Custom, made-to-order colors available

#### Warranty:

10 years color retention and film integrity warranty\*

#### Building requirements:

Suitable for BCA Class 1 and 10 buildings:

- Single domestic residential dwelling up to 3 storeys
- Free standing structure (ie shed, boat house, car port etc)

#### Environmental conditions:

Located greater than 100 metres from shore line or coast

#### Standards:

AAMA2603, AS3715

#### Project suitability:

Suitable for both exterior and interior applications.

**Exterior applications:** Domestic residential up to 3 storeys in height, pool fences, gutter brackets, car ports etc

**Interior fitouts:** Skirting boards, office partitions, office lighting, chairs/tables, outdoor furniture, lighting etc

### Performance Note

The Interpon D1000 range has been specifically engineered to meet both AS3715 and AAMA2603 standards where routine maintenance is expected.

\* Warranty conditions apply.



# Systems for Other Metals





# Systems for Other Metals

## Performance Warranties



### Metaplex Commercial (2 coat powder system)

<b>Primer</b>	Interpon MetaPrep™ EL286A	Interpon MetaPrep™ EL286A
<b>Top coat colors:</b>	<b>Interpon D2525 range</b> Standard and made-to-order colors available	<b>Interpon 200 polyurethane range</b> Made-to-order colors available
<b>Product performance warranty:</b>	15 years color retention and film integrity warranty*	10 years color retention and film integrity warranty*
<b>Building requirements:</b>	Any building, any height	Any building, any height
<b>Environmental conditions:</b>	All locations where ultra durable weatherability is required	All locations where exceptional durable weatherability is required
<b>Standards:</b>	Preparation: AS4506 Top coat: AS3715, AAMA2604	Preparation: AS4506 Top coat: AS3715, AAMA2603
<b>Project suitability:</b>	Suitable for commercial and industrial projects <b>Commercial</b> (excludes architectural aluminium extrusions): Balustrades, fencing, architectural metalwork, steel doors and frames, decorative screens, perforated screens, street furniture, building components etc	
<b>Suitable substrates:</b>	Mild steel, hot dip galvanising, galvanised tube, hot & cold rolled steel, stainless steel, aluminium components (excludes architectural aluminium extrusions)	

\* Warranty conditions apply.

#### West Footscray Station

Melbourne, Australia

**Architect**  
Thiess

**Builder/Developer**  
Thiess Balfour Beatty Joint Venture

**Product**  
Interpon D2525 Futura™ Charcoal Matt

**Components coated**  
Perforated panels & expanded aluminium panel - galvanized woven wire & frame components



#### Specification Example for Metaplex Commercial

Dual layer top coat warranty system

Barrier Primer: Interpon MetaPrep™ EL286A Primer

Color: Interpon D2525 Futura™ Anodic Natural Matt YY223A  
15 year top coat performance warranty

Or Interpon 200 High Durability Polyurethane top coat  
10 year top coat performance warranty

Note: To be prepared and applied by an Interpon Metaplex Commercial Accredited Applicator





# Other Metals

## Performance Warranties

### Metaplex Standard



<b>Colors:</b>	Any color from the Interpon D1000 range or Interpon 200 range
<b>Product performance warranty:</b>	10 years color retention and film integrity warranty*
<b>Building requirements:</b>	<p>Suitable for BCA Class 1 and 10 buildings:</p> <ul style="list-style-type: none"> <li>• Single domestic residential dwelling up to 3 storeys</li> <li>• Free standing structure (ie shed, boat house, car port etc)</li> </ul>
<b>Environmental conditions:</b>	Located greater than 100 metres from shore line or coast
<b>Standards:</b>	<p>Preparation: AS4506</p> <p>Top coat: AS3715, AAMA2603</p>
<b>Project suitability:</b>	<p>Suitable for residential projects</p> <p><b>Residential</b> (<i>excludes architectural aluminium extrusions</i>): Balustrades, fencing, architectural metalwork, steel doors and frames, building components etc</p>
<b>Suitable substrates:</b>	Mild steel, hot dip galvanising, galvanised tube, hot & cold rolled steel, stainless steel, aluminium components ( <i>excludes architectural aluminium extrusions</i> )



### Interpon 200 Polyurethane for Metaplex Systems

Both Metaplex Systems use **Interpon 200** polyurethane products. With its excellent corrosion resistance and mechanical properties, **Interpon 200** lends itself ideally to protecting the lifespan of your coated components.

Exceptional resistance to mechanical damage makes **Interpon 200** ideal for applications where long term durability and aesthetic performance are required.

Typical end uses include infrastructure components, agricultural equipment, transportation equipment and industrial components.



# Corrosion Warranties





# Corrosion Protection Warranties

## Steelplex™ Systems

<b>Colors:</b>	Various products from Interpon D1000 and Interpon D2525 Futura™ range†
<b>Product performance warranty:</b>	Up to 15 years color retention and film integrity warranty* Up to 10 years corrosion protection*
<b>Building requirements:</b>	Any building, any height
<b>Exterior environmental conditions:</b>	Greater than 20 metres from coastal or aggressive atmospheres
<b>Standards:</b>	Preparation: AS4506 Top coat: AS3715, AAMA2604 (Interpon D2525 Futura™) AS3715, AAMA2603 (Interpon D1000)
<b>Project suitability:</b>	Ideal for residential and commercial projects  <b>Residential:</b> Architectural steelwork, steel window systems, steel balustrades, steel fencing, structural steelwork, building components etc  <b>Commercial:</b> Architectural steelwork, steel window systems, steel balustrades, steel fencing, structural steelwork, building components etc
<b>Suitable substrates:</b>	Mild steel

† Depending on the System chosen.

\* Warranty conditions apply.



### Specification Example for Steelplex™ Diamond 10

Prepare and coat in accordance with Interpon Steelplex™ Diamond 10 preparation criteria

Color: Interpon D2525 Futura™ Anodic Natural Matt YY223A

To provide 10 year anti-corrosion and 15 year top coat performance warranties

Note: To be prepared and applied by an Interpon Steelplex™ Diamond 10 Accredited Applicator

# Corrosion Protection Warranties



	Steelplex™ Ruby	Steelplex™ Diamond 5	Steelplex™ Diamond 10
<b>Color retention warranty</b>	10 years	Up to 15 years	15 years
<b>Film integrity warranty</b>	10 years	Up to 15 years	15 years
<b>Corrosion protection warranty</b>	Up to 3 years	Up to 5 years	Up to 10 years
<b>Exterior environmental conditions</b>	Greater than 500 metres from coastal or aggressive atmospheres	Greater than 500 metres from coastal or aggressive atmospheres	Greater than 20 metres from coastal or aggressive atmospheres
<b>System</b>	2-coat system	2-coat system	3-coat system
<b>Pre-treatment</b>	Abrasive blast and Multi-Stage Phosphate	Abrasive blast	Abrasive blast
<b>Primer</b>	Interpon MetaPrep™	Interpon PZ 560 or Interpon PZ 790	1st coat: Interpon PZ 790 2nd coat: Interpon MetaPrep™
<b>Top Coat</b>	Interpon D1000	Interpon D2525 Futura™ or Interpon D1000	Interpon D2525 Futura™





# Perforated Panels & Expanded Aluminium Mesh





# Perforated Panels & Expanded Aluminium Mesh

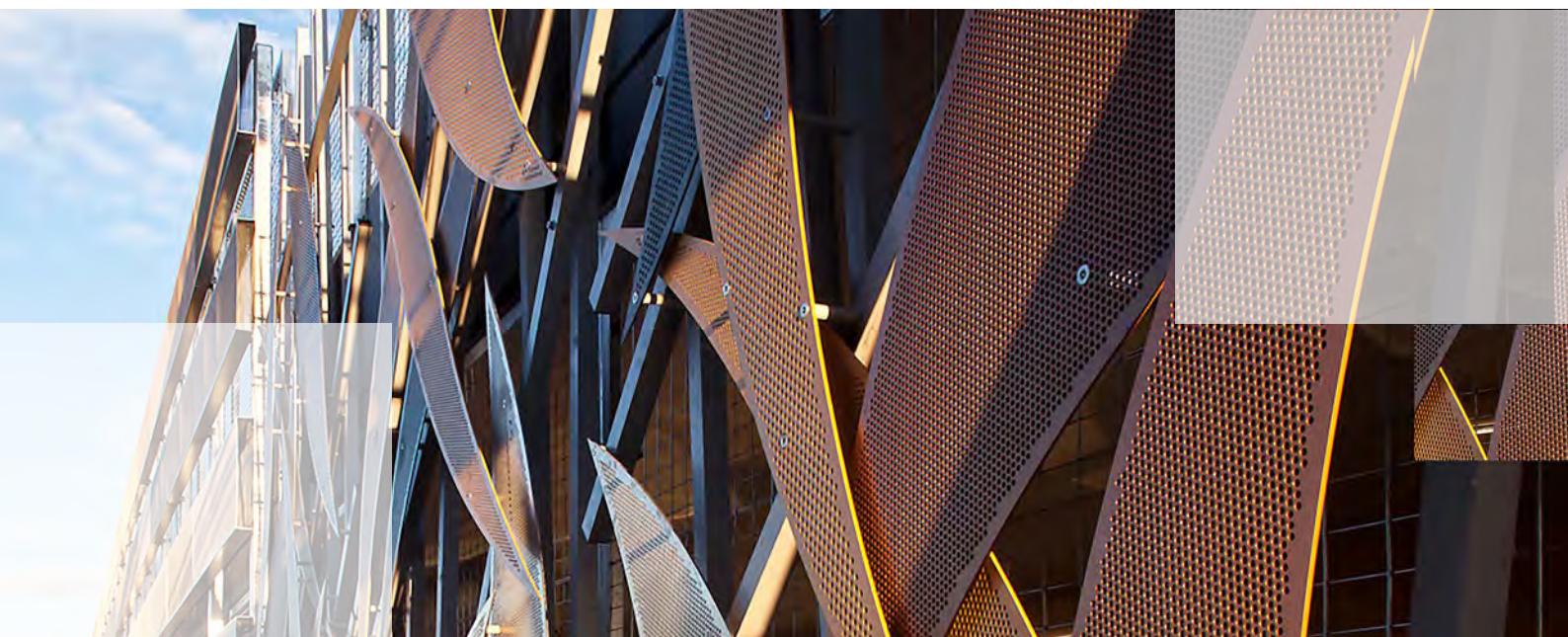
Interpon recommends the use of a barrier coat epoxy powder primer (MetaPrep™ Grey EL286A) as an undercoat for all perforated aluminium where an Interpon D warranty is required specific to the environmental Classifications of AS4312.

The use of an epoxy barrier primer is required to coat the perforated panels/ expanded mesh with powder primer to achieve an adequate film build and protection to the sharp edges and minimise issues associated with filiform corrosion, which can be encountered if insufficient film build is achieved in environments of high corrosivity.

The details outlined below are Interpon's general guide for where Interpon MetaPrep™ Barrier Primer should be recommended or conversely is mandatory for the warranty to be applicable commensurate with the appropriate aluminium panel systems.

## Environmental Classifications as per AS4312

Environmental Classifications (as per AS4312)	Perforated Screens	Expanded Metal Mesh
C5	Interpon MetaPrep™ – Mandatory for warranty to apply. (Less than 500 meters from a coast shoreline or aggressive atmosphere)	Interpon MetaPrep™ EL286A Barrier Primer Mandatory for warranty to apply. (Less than 2 km from a coast or shoreline)
C4	Interpon MetaPrep™ – Mandatory for warranty to apply. (Less than 500 meters from a coast shoreline or aggressive atmosphere)	Interpon MetaPrep™ EL286A Barrier Primer Mandatory for warranty to apply. (Less than 2 km from a coast or shoreline)
C3	Interpon MetaPrep™ – Recommended but not mandatory	Interpon MetaPrep™ – Recommended but not mandatory
C2	Interpon MetaPrep™ – Recommended but not mandatory	Interpon MetaPrep™ – Recommended but not mandatory
C1	Interpon MetaPrep™ – Recommended but not mandatory	Interpon MetaPrep™ – Recommended but not mandatory





**AUSTRALIA**  
e: salesoz@interpon.com  
www.interpon.com.au  
www.specifyinterpon.com.au

Tel: 1800 630 516  
Fax: 1800 650 786

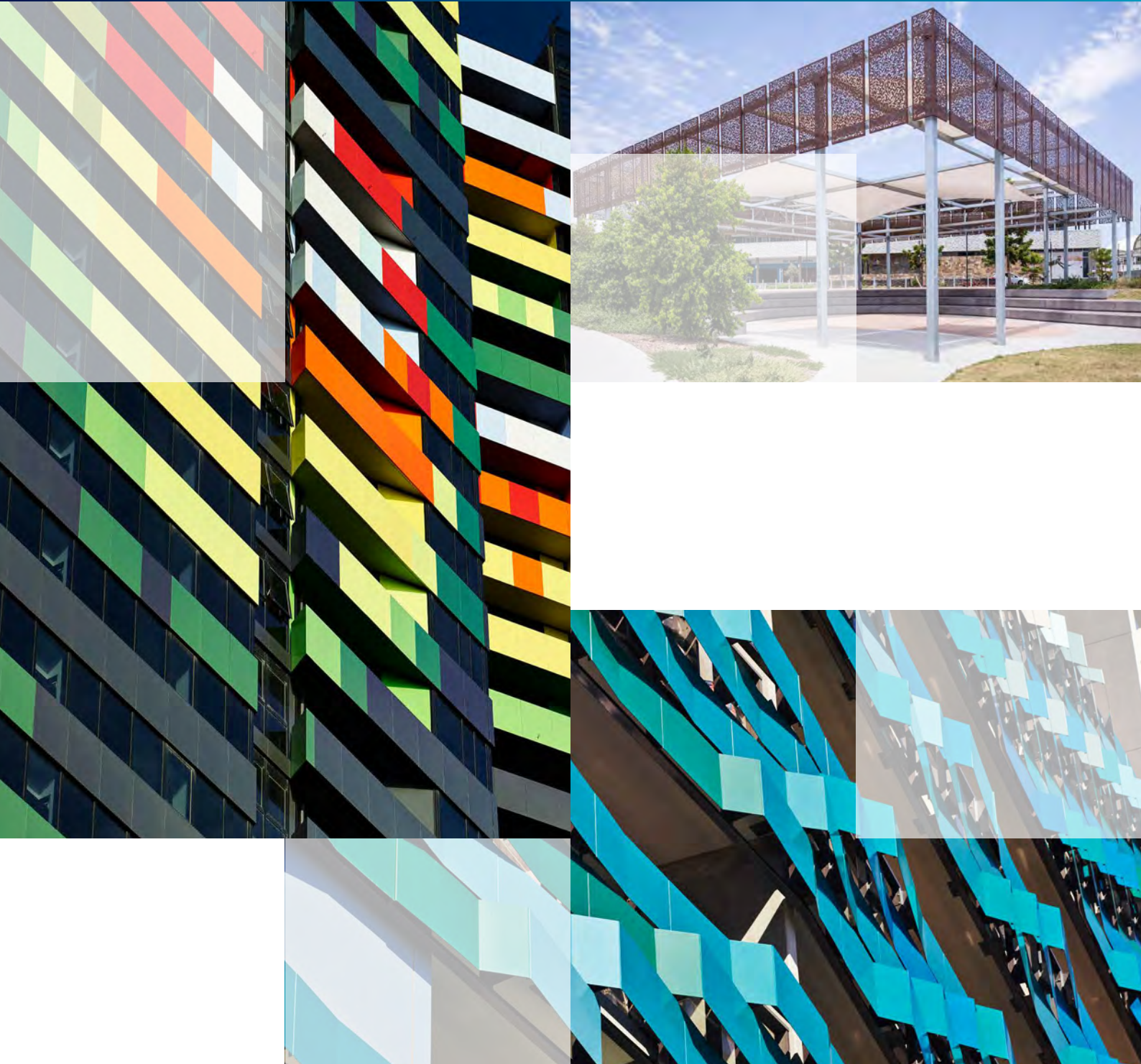
**NEW ZEALAND**  
e: salesnz@interpon.com  
www.interpon.co.nz

Tel: 0800 150 527  
Fax: 0800 809 679



EDP applies to D1000, D2525 and D3020 products only

## Interpon: Specifications Guide



All products supplied and technical advice given are subject to the standard terms of sale of the AkzoNobel supplying company. Typical end uses for Interpon products are displayed in this publication using actual projects and representative images.

\*Warranty applies only to aluminium when coated by an Interpon Approved Applicator.

Terms and conditions apply. Contact your Interpon representative for further details.

Interpon® and Fluoromax® are registered trademarks of Akzo Nobel International BV. Futura™ and Steelplex™ are trademarks of Akzo Nobel Pty Limited. COLORBOND® is a registered trademark of BlueScope Steel Limited.

© Copyright 2013 AkzoNobel Pty Limited ABN 59 000 119 424

January 2019

# Interpon®