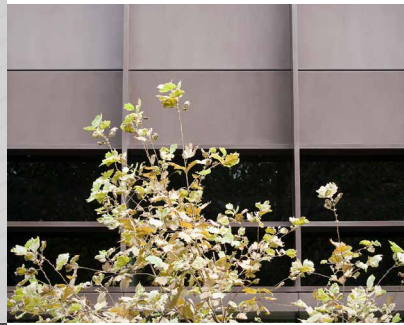


Interpon Flat Matt



AAMA 2604

AUSTRALIA
 e: salesoz@interpon.com
 www.specifyinterpon.com.au

NEW ZEALAND
 e: salesnz@interpon.com
 www.specifyinterpon.co.nz

Tel: 1800 630 516
 Fax: 1800 650 786

Tel: 0800 150 527
 Fax: 0800 809 679

Interpon Flat Matt provides the modern, timeless look that designers appreciate. The ultra matt finish and the interaction of light on these surfaces, opens up new possibilities in aesthetics. The Flat Matt range also offers amazing durability in the harshest of environments.

- Ultra flat matt powder coating
- Non-reflective
- Soft to touch
- Selected solid & metallic colors
- AAMA 2604

Product Performance

	D2525 Flat Matt*
AS3715	✓
AAMA 2603	✓
AAMA 2604	✓
Building Code of Australia	All BCA classes. Any building, any height. All locations
Film integrity warranty	25 years
Color retention warranty	15 years

* D2525 is only suitable for coastal environments >10m from the high tide.
 * When applied by an Interpon Accredited Approved Applicator.

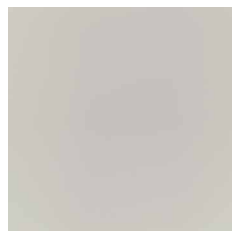
FLATMATTFINISH



White
 Flat Matt YA25BA s
 RGB 229, 236, 236 LRV 86%



Linen
 Flat Matt YY28PA s
 RGB 222, 224, 218 LRV 73%



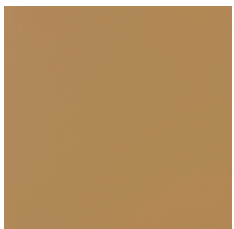
Natural Shimmer
 Flat Matt YY25AA s
 RGB 186, 190, 189 LRV 46%



Champagne Shimmer
 Flat Matt YY24NA s
 RGB 135, 127, 114 LRV 25%



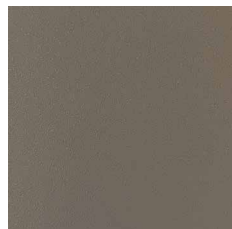
Sunstone Bronze
 Flat Matt YY21BA s
 RGB 122, 115, 99 LRV 17%



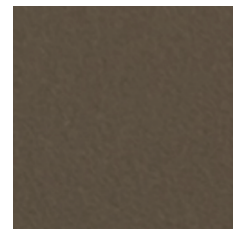
Pure Gold
 Flat Matt YY22BA s
 RGB 169, 141, 95 LRV 27%



Golden Touch Pearl
 Flat Matt YY25BA s
 RGB 133, 119, 92 LRV 22%



Brilliance
 Flat Matt YY23TA s
 RGB 103, 99, 88 LRV 15%



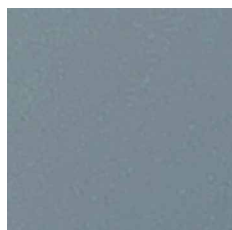
Medium Bronze Pearl
 Flat Matt YY23NA o
 RGB 87, 80, 66 LRV 11%



Dark Bronze
 Flat Matt YY20BA s
 RGB 67, 65, 56 LRV 6%



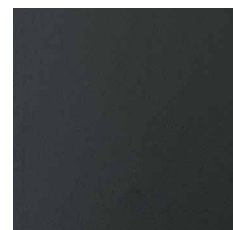
Monument®
 Flat Matt YP229A s
 RGB 55, 59, 57 LRV 6%



Pacific Blue
 Flat Matt YY23BA o
 RGB 112, 129, 133 LRV 20%



Vintage Silver
 Flat Matt YY22NA s
 RGB 105, 109, 110 LRV 18%



Black Ink
 Flat Matt YN21BA s
 RGB 48, 53, 51 LRV 4%

s Stocked Product o Made to Order Product

Disclaimer
 Unless otherwise agreed by us in writing, any contract to purchase products referred to in this color card and any advice that we give in connection with the supply of products are subject to our standard conditions of sale. Typical end uses for Interpon products are displayed in this publication using actual projects and representative images. AkzoNobel endeavours to ensure the information contained in this publication is correct at the time of printing. All products referred to and any technical advice provided is subject to the standard terms and conditions of sale of the AkzoNobel supplying company. Interpon® is a registered trademark of AkzoNobel Pty Limited. ®Color names are registered trademarks of Bluescope Steel Limited. Overtime performance may vary between COLORBOND® steel and Interpon Powder Coatings due to the different paint technologies used. Stocked Products and Made to Order products are correct at time of print. AkzoNobel reserves the right to change stocking policy.

© Copyright 2019 AkzoNobel Pty Limited. Printed September 2019. 00090_210319 IEZZI I688

Interpon®